

Hooking into the EFT Manufacturing OI from TestStand

The EFT Manufacturing OI has many hooks available from TestStand to provide operator feedback. This article describes the process for creating test steps that that allow test sequences to update the EFT Manufacturing OI:

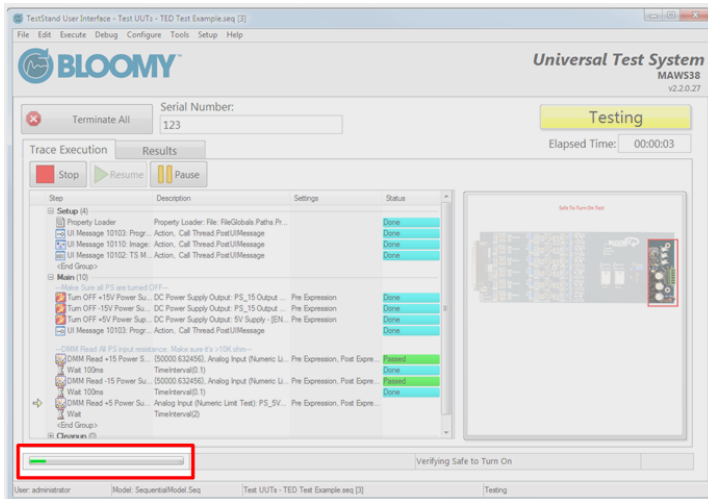
- Set and Execution message to be displayed to the operator
- Set progress bar percentage and text
- Display an image to the operator

-
- OI Control Items
 - Progress Bar Percent
 - Progress Text
 - Execution Image
 - Execution Message
 - Using Expressions and TestStand ActiveX Interfaces
 - EFT OI Interface StepType

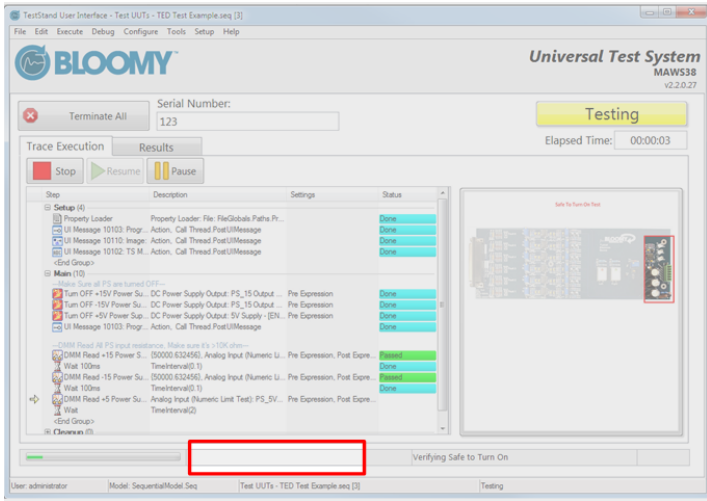
OI Control Items

Each OI control item is set by sending a TestStand User Interface Message (PostUIMessageEx method)

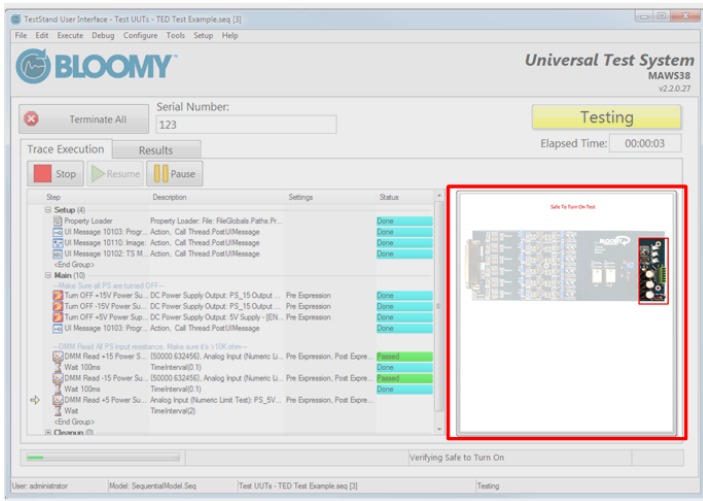
Progress Bar Percent



Progress Text

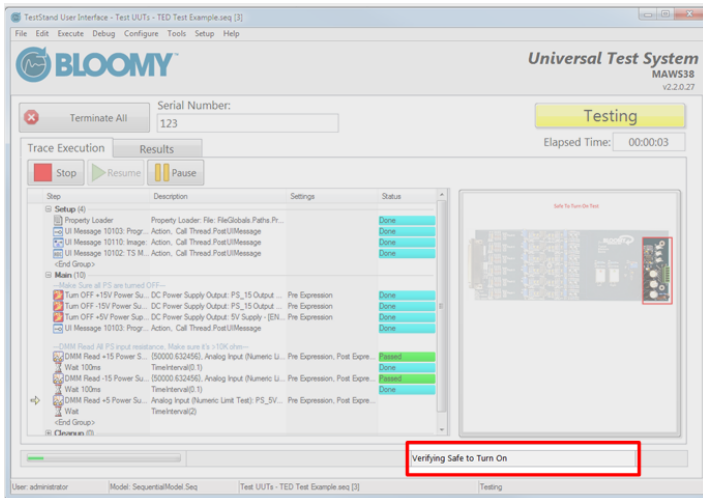


Execution Image



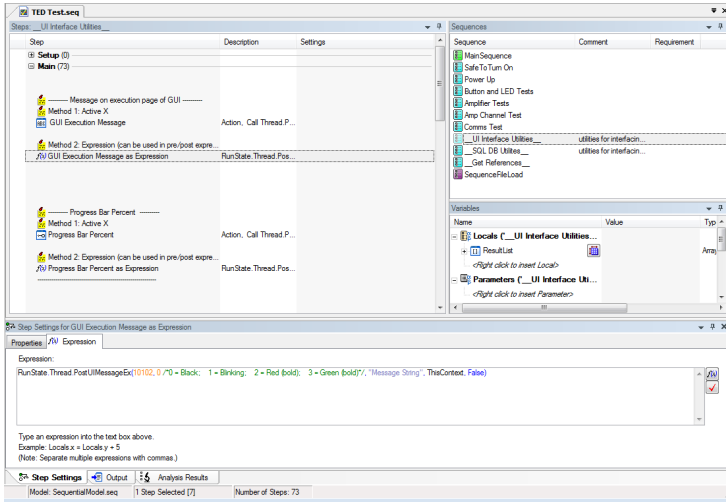
Execution Message

Can be black, blinking, bold red, or bold green



Using Expressions and TestStand ActiveX Interfaces

The TED Test.seq shipping example provides a utility subsequence, called "__UI Interface Utilities__" which provides several examples for how to send the appropriate UI messages to the UI, using either ActiveX adapters or through expressions (which can be copied into pre- or post-expressions of other steps).




EFT OI Interface StepType

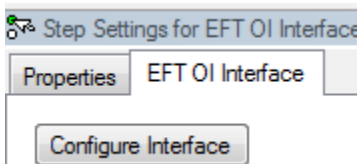
EFT OI Interface StepTypes Installer

EFT OI Interface StepTypes v1_0.EXE

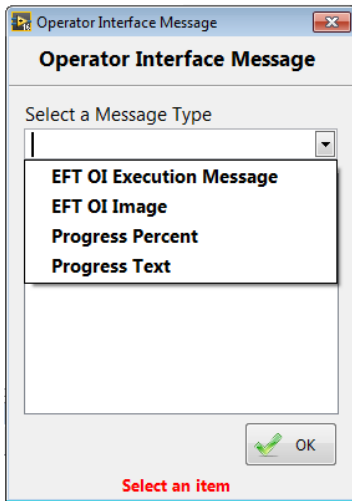
The EFT OI Interface StepType provides a more intuitive way to control the OI through TestStand.

To use the step type:

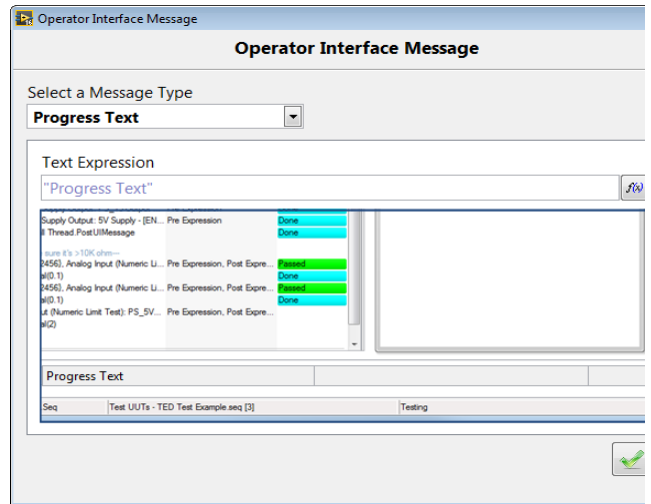
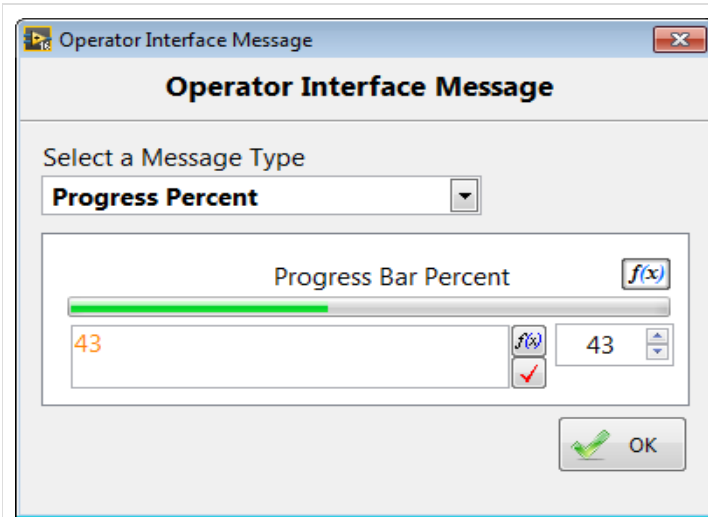
1. Drag the EFT OI Interface StepType into your sequence  EFT OI Interface
2. Click "Configure Interface" on the step settings tab



1.
3. Select the message to send from the dropdown box



- 1.
4. Enter the information for the selected message type.
 1. Note, most messages can be set using TestStand expressions to provide maximum flexibility
 2. Most messages will also display a preview of the item in the EFT Manufacturing OI



Operator Interface Message

Operator Interface Message

Select a Message Type
EFT OI Execution Message

Message Expression: "Execution Message" Display Format: Bold Red

Test Step	Pre Expression	Post Expression	Status
Supply Output: 5V Supply - [EN]			Done
Thread: PostUIMessage			Done
Test: 0's - [10K ohms]			
M456: Analog Input (Numeric U...			Passed
M(0.1)			Done
M456: Analog Input (Numeric U...			Passed
M(0.1)			Done
M (Numeric Limit Test): PS_5V...			Done
M(2)			

Execution Message

Sec: Test UUTs - TED Test Example seq [3] Testing

OK

Operator Interface Message

Operator Interface Message

Select a Message Type
EFT OI Image

Specify As
Absolute Path

Absolute Path: C:\Users\Bloomy\Documents\UUT Test Files\Tests\TED Example\Support Files\Images\TED1.jpg Show Caption

Testing
Elapsed Time: 00:00:03

Settings	Status
Globals Paths Pr...	Done
JIMessage	Done
JIMessage	Done
JIMessage	Done
PS_15 Output ... Pre Expression	Done
PS_15 Output ... Pre Expression	Done
5V Supply - [EN] ... Pre Expression	Done
JIMessage	Done
Input (Numeric U... Pre Expression, Post Expre...	Passed
Done	Done
Input (Numeric U... Pre Expression, Post Expre...	Passed
Done	Done
M Test): PS_5V... Pre Expression, Post Expre...	Done

Verifying Safe to Turn On

Test UUTs - TED Test Example seq [3] Testing

